



imaginepools®

🌐 [www.imaginepools.com](http://www.imaginepools.com)  
☎ (800) 997-7665

©2023 Imagine Pools. All rights reserved. Imagine Pools® products are supplied primarily through a network of independently owned and operated dealers authorized to sell and install various products under a license from Imagine Pools®. These dealers are not owners, employees or agents of Imagine Pools® and Imagine Pools® is not responsible for the actions of these dealers or liable for any related damage to persons, property or Imagine Pools® products. For further information regarding the relationship between Imagine Pools® and its dealers and for related advice to purchasers, please refer to the Terms and Conditions portion of the Imagine Pools® website at [www.imaginepools.com](http://www.imaginepools.com).

 **Explore**  
INDUSTRIES  
An Explore Industries Company

welcome to imagine pools®

## We are here to help families enjoy Life at its Best™

---

We believe it's important to do more of what makes you happy. Relaxing in the presence of your own private pool can be the ultimate in what brings joy to your life. If you want to bring more quality to your life, then just add water. Plus, with a composite fiberglass swimming pool from Imagine Pools®, you can host amazing parties and gatherings. Or, if it is solitude and tranquility you desire, then let the staycation begin. The options are endless.





## A Beautiful Reflection of all the things you cherish most

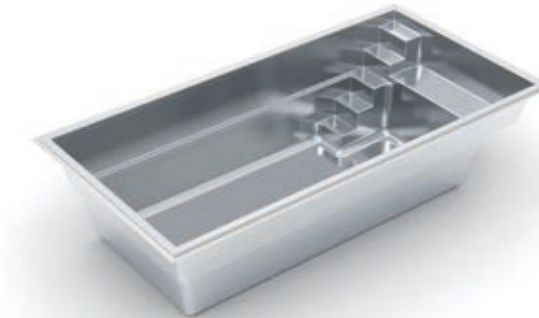
Do you believe in the beauty of your dreams? Imagine Pools® does. Just dream it and we can make it happen. Let your dreams show you the way to your own beautiful backyard pool.



## Plug and Play

With an Imagine Pools® composite fiberglass swimming pool, you're free to choose from a vast array of sizes, shapes, colors and configurations that perfectly suit your tastes and your space. Then, it's simply plug-and-play. Your installer can prep one day and set your pool the next, saving your family from months of backyard chaos. From design to delivery to installation, every aspect of your new Imagine Pools® swimming pool is, quite literally, seamless.





## The Vision™

LENGTH	WIDTH	DEPTH
26' 0"	10' 0"	4' 11"
23' 0"	10' 0"	4' 11"
20' 0"	10' 0"	4' 11"
16' 0"	10' 0"	4' 11"



- + Sleek, modern design allows for unlimited landscaping possibilities for both traditional and modern aesthetics
- + Large bench located at the step end with option to incorporate spa jets
- + Well-positioned entry and exit steps lead down to the pool floor
- + Flat-bottom design makes it the perfect pool for playing pool games or exercising



## The Freedom™

LENGTH	WIDTH	DEPTH
30' 0"	13' 0"	4' 11"
26' 3"	13' 0"	4' 11"
22' 11"	13' 0"	4' 11"

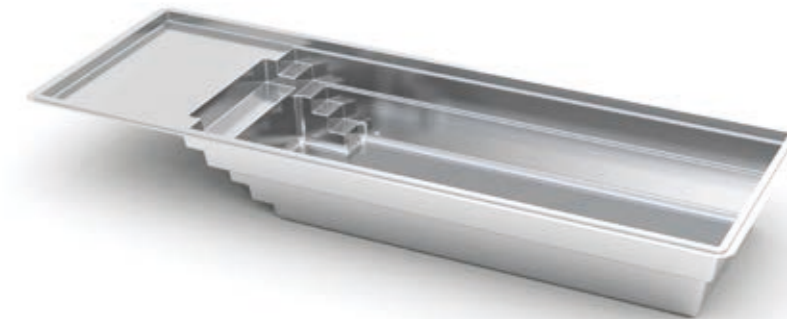


- + Large bench located at the step end with option to incorporate spa jets
- + Flat-bottom design makes it the perfect pool for playing games or exercising
- + Option to incorporate a swim jet system to provide resistance training for the avid swimmer  
(Swim jets sold separately)
- + Convenient entry and exit steps allow access from both sides of the pool





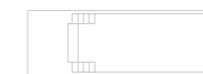
THE FREEDOM WITH SPLASH PAD™ WITH THE DREAM™ SPA  
presented in storm grey



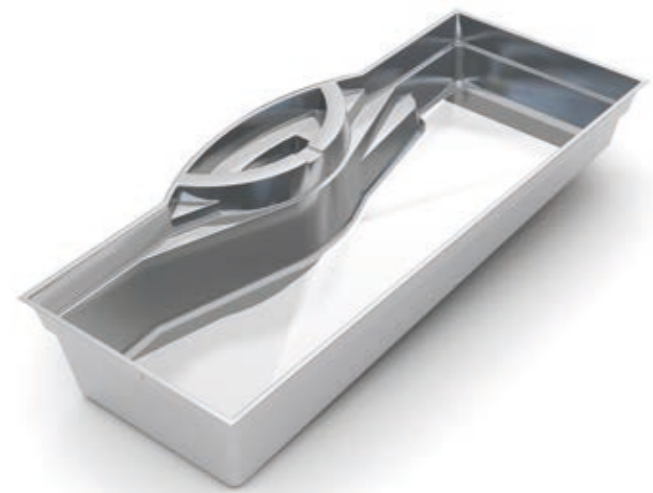
## The Freedom™

with Splash Pad

LENGTH	WIDTH	DEPTH
37' 4"	12' 11"	4' 11"
33' 8"	12' 11"	4' 11"
30' 4"	12' 11"	4' 11"



- + Large splash pad is ideal for young kids to splash around or adults to relax on pool lounge chairs
- + Flat-bottom design makes the pool perfect for activities
- + Option to incorporate a swim jet system to provide resistance training for the avid swimmer  
(Swim jets sold separately)
- + Convenient entry and exit steps allow access from both sides of the pool
- + Large splash pad with depth of 7" from top to bottom  
(Actual water depth will vary upon fill capacity and positioning of the skimmer box)



NEW Model will be available in 2024

## The Opulence™

LENGTH	WIDTH	SHALLOW	DEEP
32' 10"	14' 5"	4' 0"	6' 0"
29' 6"	14' 5"	4' 0"	5' 10"
26' 3"	14' 5"	4' 0"	5' 9"



- + Unique integrated spa design
- + Large, unobstructed swimming corridor, ideal for playing games or swimming laps
- + Intuitive entry and exit steps lead down to the pool
- + Sleek, modern design allows for unlimited landscaping possibilities

Note: provided dimensions and specific integrated feature details are pre-production estimates and subject to change



SPECIFICATIONS ARE PRELIMINARY  
 MEASUREMENTS SUBJECT TO CHANGE  
**Early Concept**





THE BLISS™  
presented in reef blue



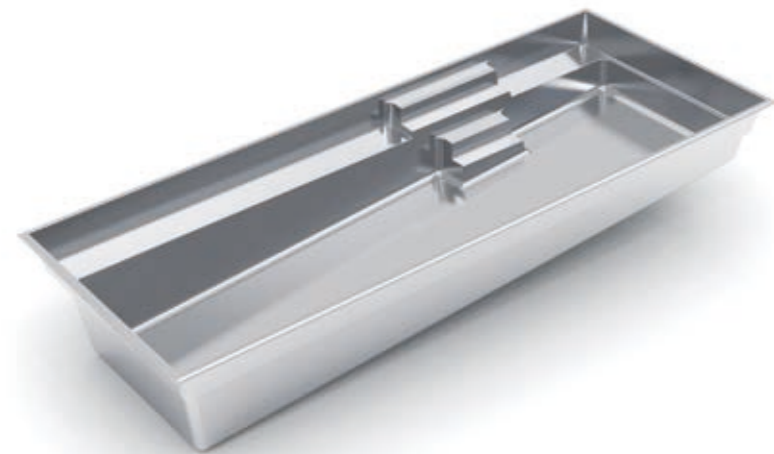
NEW Preliminary dimensions subject to change

## The Bliss™

LENGTH	WIDTH	SHALLOW	DEEP
35' 0"	14' 0"	3' 6"	6' 2"
30' 0"	14' 0"	3' 6"	5' 8"
26' 0"	12' 6"	3' 6"	5' 5"



- + Large, built-in splash pad with depth of 12" from top to bottom  
(Actual water depth will vary upon fill capacity and positioning of the skimmer box)
- + Convenient entry and exit steps
- + Full-length swimming channel for fun or exercise
- + Extended bench allows for multi-swimmer seating or recreational enjoyment



## The Marvelous™

LENGTH	WIDTH	SHALLOW	DEEP
40' 0"	15' 6"	4' 0"	6' 6"
35' 0"	15' 6"	4' 0"	6' 1"
30' 0"	15' 6"	4' 0"	5' 10"



- + Features a wide bench seat running the entire length of the pool
- + Large, unobstructed swimming corridor, ideal for playing games or swimming laps
- + Well-positioned entry and exit steps lead down to the pool floor
- + Sleek, modern design allows for unlimited landscaping possibilities
- + Perimeter swimout surrounding perimeter of pool





THE ILLUSION™  
presented in reef blue

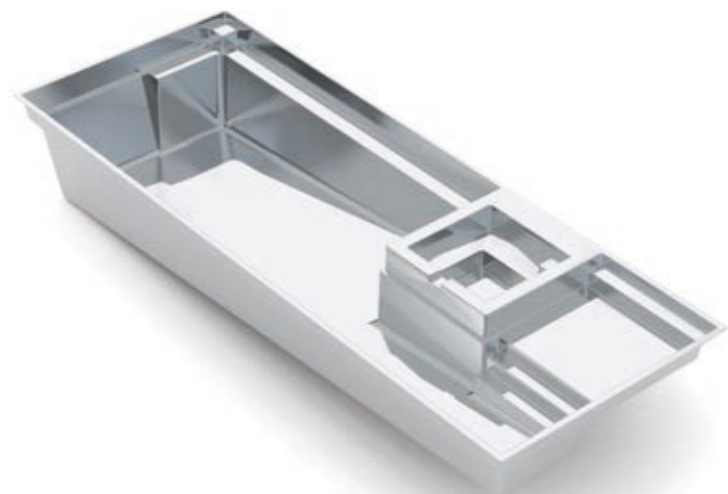


## The Illusion™

LENGTH	WIDTH	SHALLOW	DEEP
40' 0"	15' 4"	4' 5"	6' 11"
35' 0"	15' 4"	4' 5"	6' 6"
30' 0"	15' 4"	4' 5"	6' 0"



- + Large, built-in splash pad that everyone can enjoy. Splash pad depth averages 16" from top to bottom  
(Actual water depth will vary upon fill capacity and positioning of the skimmer box)
- + Entry access from three sides of the splash pad
- + Sophisticated modern styling will enhance all types of backyard designs
- + Large swimming area for both exercise and fitness
- + Deep end seats/exit steps



## The Exquisite™

LENGTH	WIDTH	SHALLOW	DEEP
40' 0"	15' 5"	4' 0"	6' 6"
35' 0"	15' 5"	4' 0"	6' 2"
30' 0"	15' 5"	4' 0"	5' 10"



- + Large, built-in splash pad with depth of 20" from top to bottom  
(Actual water depth will vary upon fill capacity and positioning of the skimmer box)
- + Built-in spa, ideal for therapeutic massage jets  
(Dimensions: Length: 5'11"; Width: 5' 11". Swim jets sold separately.)
- + Full-length swimming channel for fun or exercise
- + Extended bench allows for multi-swimmer seating or recreational enjoyment





## The Celebration™

LENGTH	WIDTH	SHALLOW	DEEP
40' 0"	15' 6"	4' 0"	8' 0"



- + Features a large swim corridor ideal for avid swimmers
- + A ledge runs along the shallow end entry-side, providing bench seating and an area for relaxation
- + Plunging 8' deep end depths, making this pool perfect for having fun with diving sticks and enjoying many underwater games



## The Fantasy™

LENGTH	WIDTH	SHALLOW	DEEP
35' 0"	14' 6"	3' 6"	6' 6"
30' 0"	14' 0"	3' 6"	6' 0"
26' 0"	12' 6"	3' 6"	5' 7"



- + Beautiful, free-flowing design provides softness of curvature without the loss of swim space
- + Design allows for numerous landscaping options
- + Built-in shallow end bench with depth of 24" that everyone can enjoy  
(Actual water depth will vary upon fill capacity and positioning of the skimmer box)
- + Convenient entry and exit steps located at both the shallow and deep ends





THE BRILLIANT™  
presented in ocean blue



## The Brilliant™

LENGTH	WIDTH	SHALLOW	DEEP
40' 0"	15' 6"	4' 8"	6' 8"
35' 0"	15' 6"	4' 8"	6' 4"
30' 0"	15' 6"	4' 8"	6' 0"



- + Built-in spa located at the shallow end next to entry steps and splash pad
- + Water cascades through spa spillovers to pool and splash pad, providing a beautiful water feature
- + Large, built-in splash pad with depth of 20" from top to bottom provides the perfect playground for adults and children alike  
(Actual water depth will vary upon fill capacity and positioning of the skimmer box)
- + Secondary bench area located at the deep end of the pool



## The Inspiration™

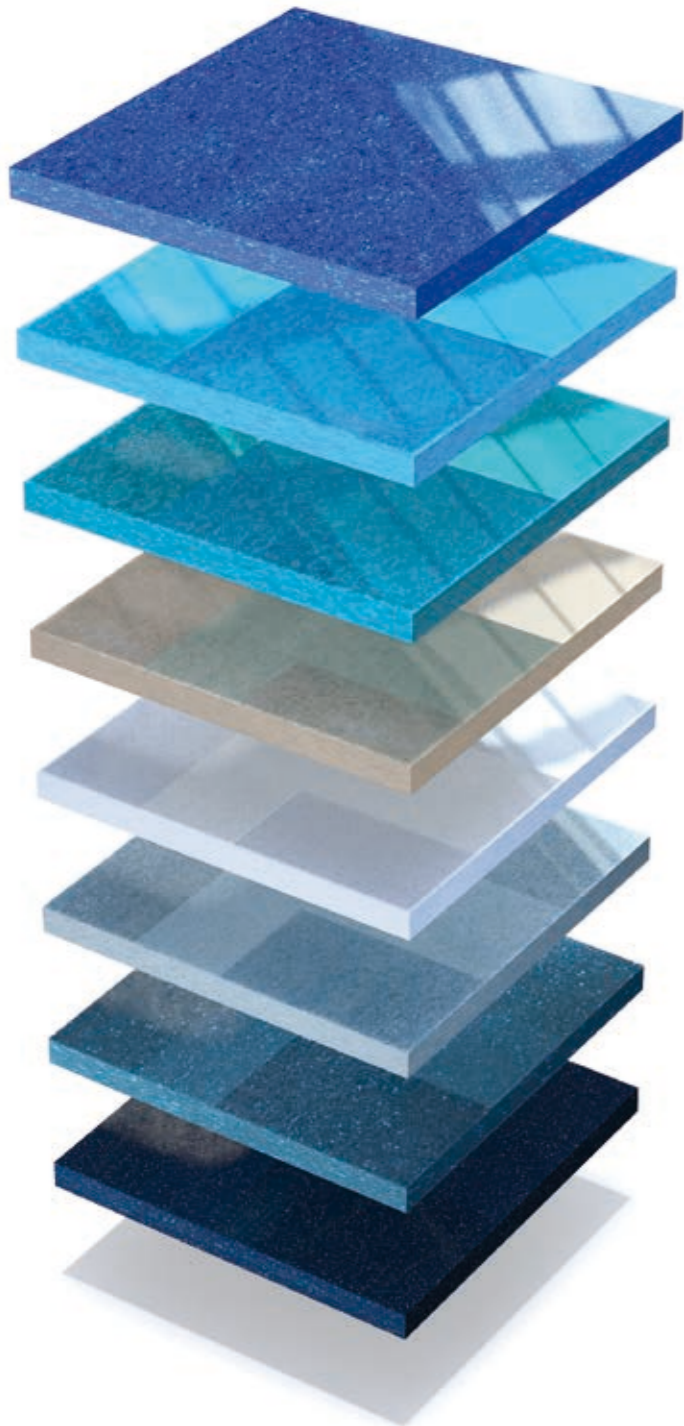
LENGTH	WIDTH	SHALLOW	DEEP
40' 0"	15' 6"	4' 2"	6' 8"
35' 0"	15' 6"	4' 2"	6' 4"
30' 0"	15' 6"	4' 2"	6' 0"
26' 0"	13' 0"	4' 1"	5' 7"
23' 0"	13' 0"	4' 1"	5' 5"



- + Curved design invokes feelings of relaxation without compromising swim space
- + Large, built-in splash pad provides the perfect playground for adults and children alike. Average depth of 16" from top to bottom  
(Actual water depth will vary upon fill capacity and positioning of the skimmer box)
- + Secondary bench area located at the deep end of the pool  
(Secondary bench not available on 23' and 26' models)
- + Convenient entry and exit steps







## Add a Splash of Color

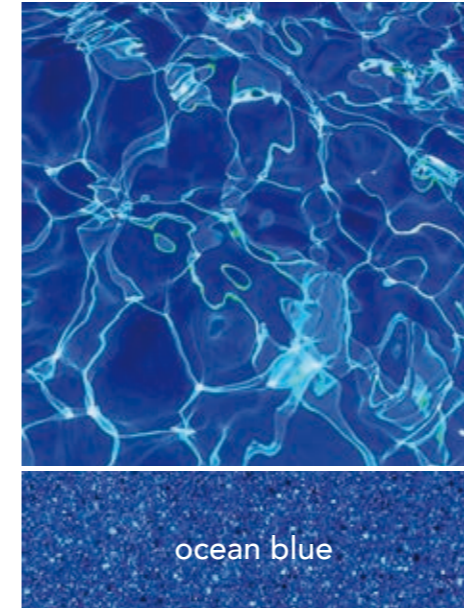
with eight beautiful options

Happiness is a day at the pool, right? From an afternoon of play making waves and creating a splash to a relaxing evening by the ambient glow of the pool lights at dusk, the possibilities for family, friends, fun and fitness are endless.

We offer the deepest, richest and highest quality gelcoat finishes on the market today. But more than just aesthetics, our gelcoat has been specifically designed with increased UV and chemical resistance to prevent color fading due to sun exposure. In addition, unlike the rough and porous surface of a traditional concrete pool, the smooth polish of our gelcoat does not allow for pits to form in the surface, which could otherwise invite the development of hard-to-scrub algae. This inviting coating also creates a barrier between the swimmer and the structural fiberglass. A special texture is intentionally applied along interior steps and ledges to increase friction under foot in areas where traction is needed.

**+** 10-Year Surface Warranty

Our dedication to development and commitment to using quality materials is how we can ensure optimal performance and lasting beauty with a 10-year Surface Warranty on every Imagine Pools® composite fiberglass swimming pool.



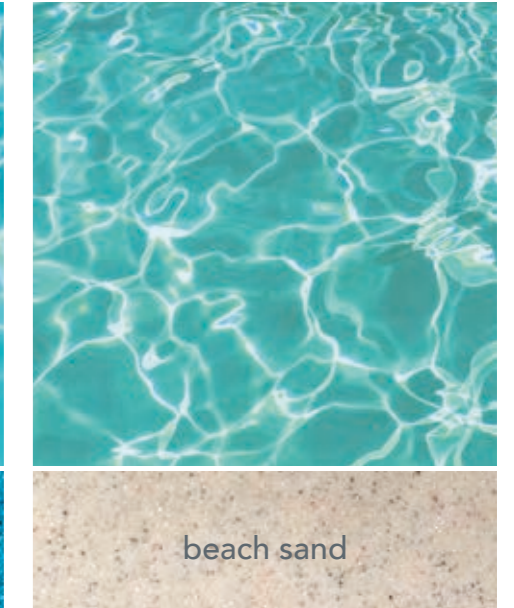
ocean blue



reef blue



coral blue



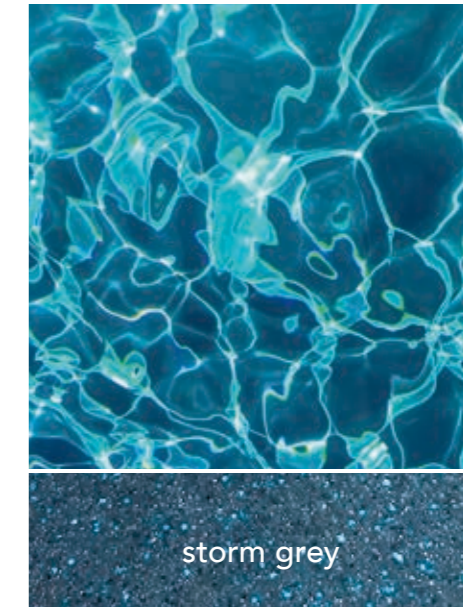
beach sand



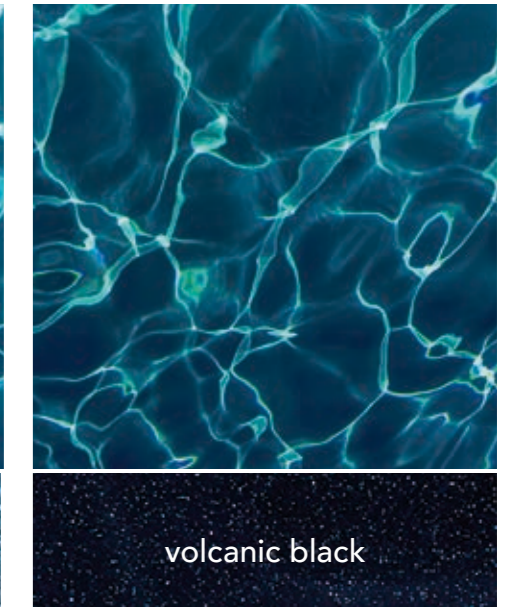
seaside sky



ice silver



storm grey



volcanic black



## Upgrade Options

enhance your pool ownership experience

Imagine Pools® invites you to bring more sunshine, happiness and unforgettable family moments to your backyard. You can further elevate this unique experience by adding a spa or tanning ledge to complement your lifestyle. By incorporating such amenities, you can easily make resort-style living a fun part of your daily routine that is always within reach.



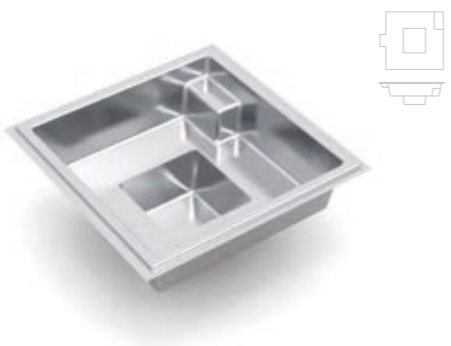


## The Mystique™

Stand Alone Square Spa

LENGTH	WIDTH	DEPTH
6' 10"	6' 10"	3' 0"

- + Experience less stress, improved circulation, better sleep and fewer symptoms of arthritis and back pain
- + Pressure from strategically placed jets help to rejuvenate the healing powers of warm water
- + Open seating format allows flexibility in use
- + Available in any color within the Imagine Pools® color range so you can easily match your pool and spa combination
- + Spillover design version also available, allowing the spout of the elevated spa to double as a water feature



## The Treasure™

Stand Alone Round Spa

LENGTH	WIDTH	DEPTH
7' 8"	7' 8"	2' 10"



- + Relax in the soothing warm water of your own spa and reduce stress and anxiety
- + Use prior to bedtime could relax your nerves and muscles allowing for a better and easier sleep
- + Circular design allows for many exciting landscaping options, as a complementary feature or a stand-alone focal point
- + Spillover design is available so that you can elevate the spa above the pool turning it into a water feature



## The Dream™

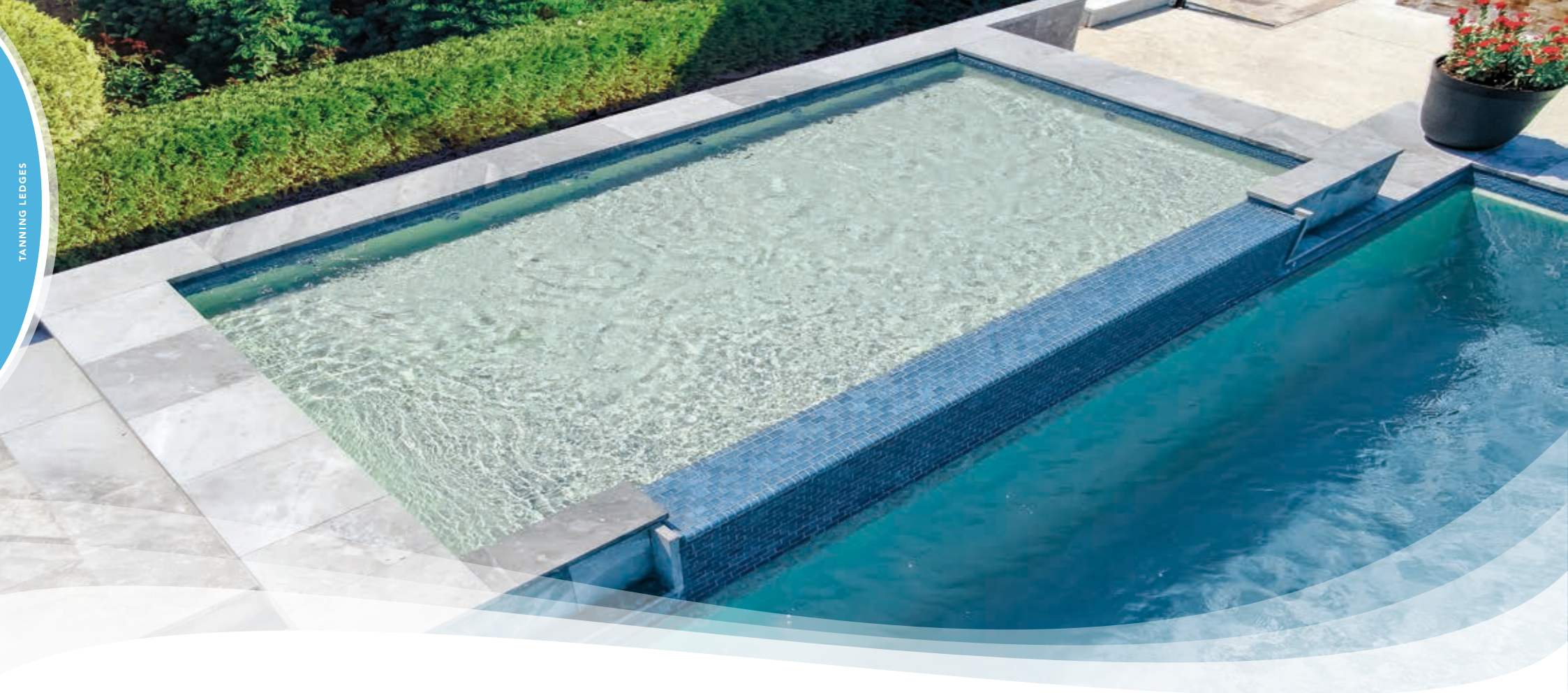
Stand Alone Square Ergonomic Spa

LENGTH	WIDTH	DEPTH
7' 3"	7' 3"	3' 2"



- + Enjoy having soothing warm water massage your body
- + Spa owners enjoy the opportunity to reduce stress and anxiety through daily usage
- + This ergonomically-designed spa will comfortably cradle your body for the ultimate in relaxation, benefitting both body and mind
- + Spillover design is available so that you can elevate the spa above the pool turning it into a water feature



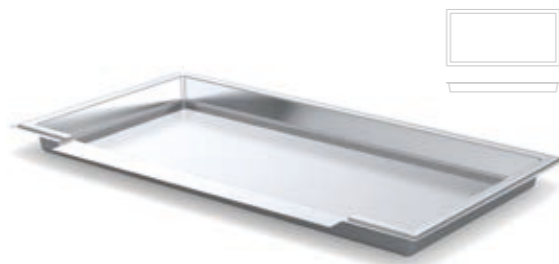


## The Lagoon™

Stand Alone Tanning Ledge

LENGTH	WIDTH	DEPTH
14' 0"	7' 3"	0' 11"

- + Ultimate luxury addition to any Imagine Pools® swimming pool
- + Versatile ledge allows full sun bathing/lounge experience
- + Wonderful area for young children to play
- + Perfect area for pets to splash in and cool down
- + Expanded length allows for multiple chairs and umbrella stands



## The Mercury™

Stand Alone Tanning Ledge

LENGTH	WIDTH	DEPTH
10' 5"	7' 0"	1' 1"



- + Easily installed alongside straight-walled models in the Imagine Pools® range of swimming pools
- + Easily accommodates one or two lounge chairs
- + Add bubblers and/or fountains for more fun
- + Choose either one center or three spillways



## The Pearl™

Stand Alone Tanning Ledge

LENGTH	WIDTH	DEPTH
10' 4"	7' 3"	1' 1"



- + Easily installed alongside freeform and curved-walled models in the Imagine Pools® range of swimming pools
- + Easily accommodates one or two lounge chairs
- + Add bubblers and/or fountains for more fun
- + Choose either one center or three spillways





# Water Features

bring style and ambiance to your pool experience

## The Waterwall™

Add On Water Feature



LENGTH	HEIGHT	DEPTH
7' 10"	2' 0"	2' 0"
4' 0"	2' 0"	2' 0"



- + Go with the flow with an added layer of peaceful relaxation
- + Minimalistic design with considerable visual appeal
- + Elevates your backyard with the soothing sounds of water
- + Option to illuminate cascade with color-changing LED lights
- + Offered in two base color options of tan or grey, ready to clad or tile to match your pool's surroundings



## The Cascade™

Add On Water Feature



LENGTH	HEIGHT	DEPTH
8' 0"	4' 0"	2' 0"



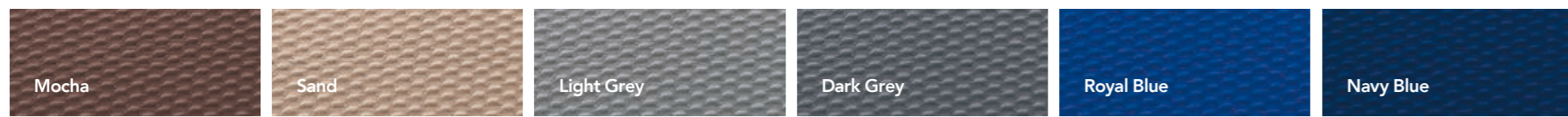
- + Creates a stunning silhouette by the pool
- + A literal livestream of tranquility
- + Choose from either 2' or 4' center-mounted silkflow sheer descent
- + Option to illuminate cascade with color-changing LED lights
- + Offered in two base color options of tan or grey, ready to clad or tile to match your pool's surroundings





# Automatic Pool Covers

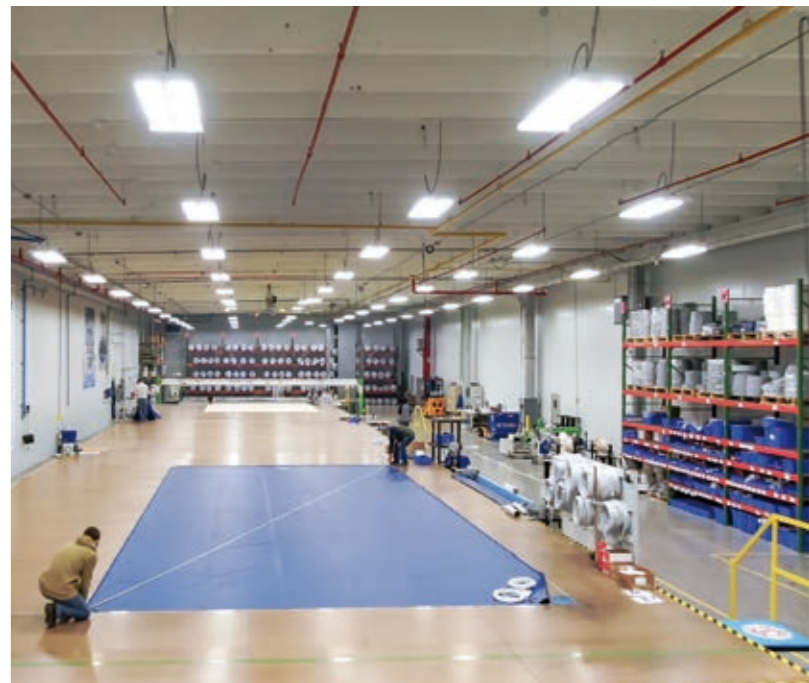
available in six vivid color options



## Security, Safety and Strength

For years of reliable protection for your fiberglass swimming pool, an automatic pool cover is your best bet. Our custom pool covers from Integra Pool Covers extend and retract automatically as they cover and uncover your pool. An automatic pool cover checks all of the boxes for safety, convenience and ease of use.

- + Automated Ease of Use**  
 just one flip of the switch and it does the rest and will lock when you are away
- + Safety Around the Pool**  
 an automatic pool cover is an effective safety barrier for kids and pets
- + Extend the Pool Season**  
 our proprietary fabric provides layers of heat retention, UV and chemical protection
- + Ease of Maintenance**  
 reduces evaporation, maintains heat and increases longevity of your pool's chemistry
- + Improves Energy Efficiency**  
 by minimizing water evaporation, you'll fill your pool less often and use less water
- + Make Your Pool Look Great**  
 color-true tones and durable material keeps your pool clean and your backyard looking beautiful

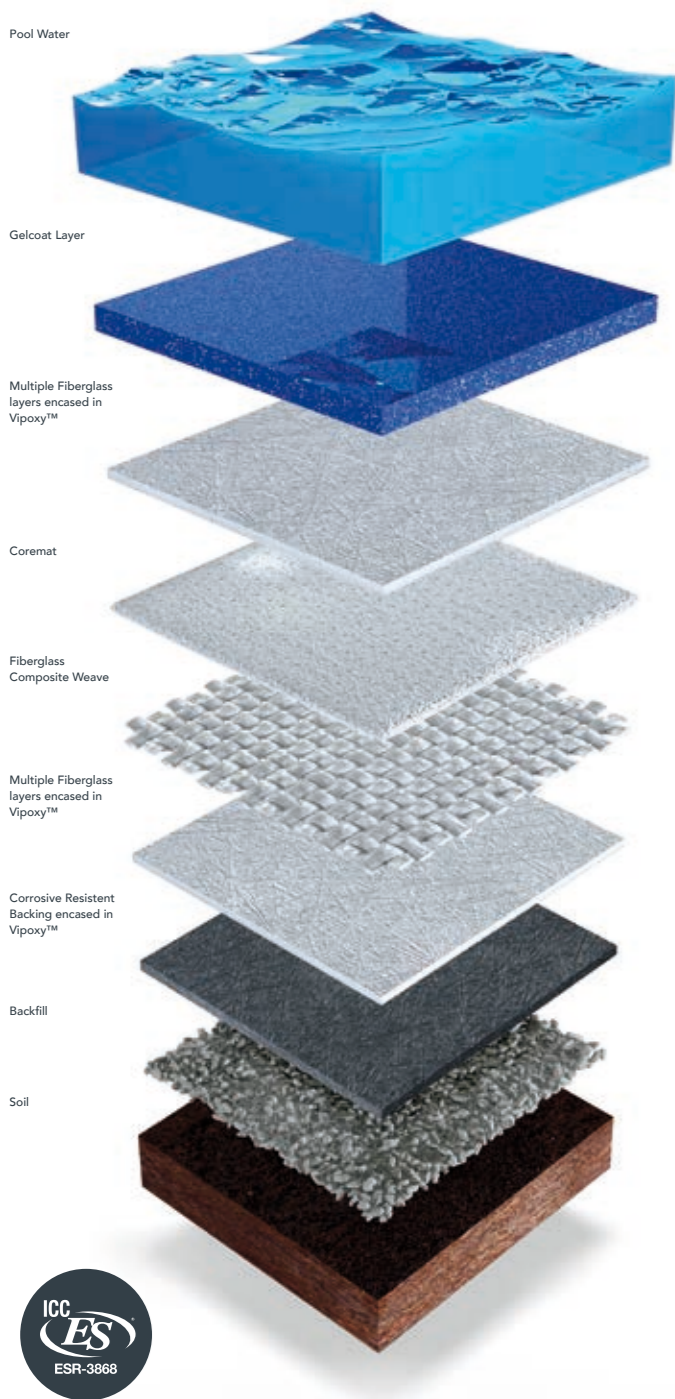




## Industry Advancements

---

Imagine Pools® swimming pools are engineered with our exclusive Centurion Core™ technology, featuring high-performance vinyl ester resin woven into each and every structural layer. We finish the surface with an exceptional gelcoat that is both beautiful to look at and smooth to the touch. The result is a top quality composite pool with extraordinary structural integrity, durability and corrosion resistance.



# Centurion Core™ construction process

To construct a fiberglass pool, it must be comprised of three main components: *the pool's gelcoat surface, the pool's structural shell and the ground in which the pool will be placed.*



Each component is affected by the other two, thus all three must be considered carefully. Our commitment to technological advancements through years of research and development has resulted in a top quality composite pool with extraordinary structural integrity, durability and corrosion resistance. In layman's terms, this means each pool we build is intentionally made with the quality of every component at top of mind. All of the products from Imagine Pools® are built under strict quality controls and must also meet the ICC ESR-3868 certification requirements, but we don't stop there.

## lifetime structural warranties

From the outside, your pool shell may look relatively uncomplicated. However, beneath the surface, there is a team of players fast at work to ensure your fiberglass pool is durable, strong and can withstand the test of time. To that end, we have incorporated alternating layers of different fiberglass materials, each individually encased in a full saturation of durable Vipoxy™ Vinyl Ester Resin Blend.

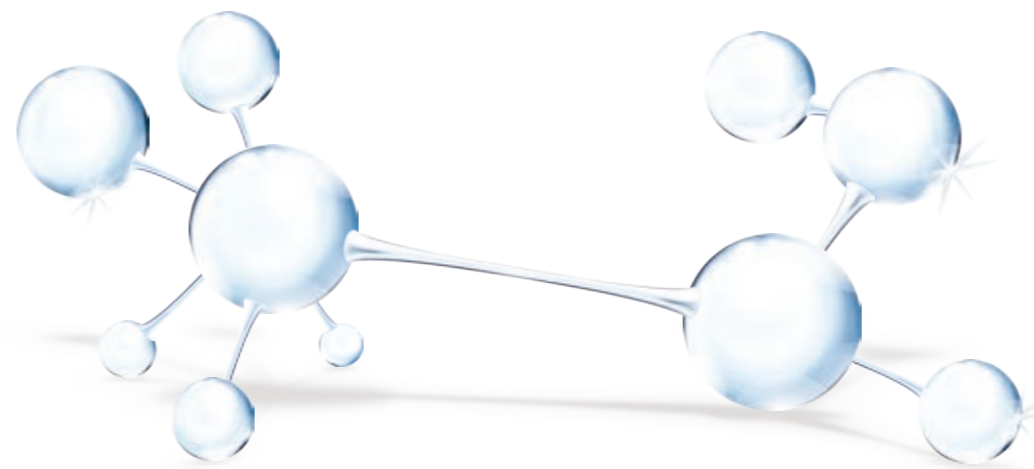
Translation? Your pool is doing what it is supposed to do: protecting itself from any structural adversities while simultaneously giving you peace of mind. We simply don't know how to do anything other than create the best pool for our customers. In fact, we stand behind that layer of confidence by covering every one of our fiberglass pools with our **Lifetime Structural Warranty AND our Lifetime Structural Osmosis Warranty.**

### + Lifetime Structural Warranty

The Lifetime Structural Warranty is your guarantee of a composite swimming pool with high tensile strength, capable of withstanding the impact of natural ground movements from the environment.

### + Lifetime Structural Osmosis Warranty

The Lifetime Structural Osmosis Warranty is your guarantee of a composite swimming pool which will act as an impermeable membrane, preventing both pool water and groundwater from penetrating into the structural laminate.



## Resin 101

The fiberglass pool industry adheres to two standards for resin: polyester resin and vinyl ester resin:

- + *Polyester resins* are created when glycol and dibasic acid interact and are then cured with a hardener additive.
- + *Vinyl Ester Resin* is produced by the reaction between an epoxy resin and an unsaturated acid and then cured with a hardener additive.

So why is Vinyl Ester Resin the best choice for a swimming pool?

- + During the process of mixing together Vipoxy™ Vinyl Ester Resin components, the backbone of the Vinyl Ester Resin's molecular chain is reinforced, strengthened with epoxy molecules, then hardened.
- + The resulting solid has far fewer open sites in its molecular chain for water to penetrate into than that of Polyester Resin, protecting the pool against hydrolysis (osmosis).



# Vipoxy™ Vinyl Ester Resin

## polyester resin vs vinyl ester resin

You don't have to be a scientist to own a pool from Imagine Pools®, but we do want to let you know when it comes to resin, we only incorporate the right compositions for the job. For your fiberglass pool to live up to its lifetime promise, durability and strength, it has to be protected against ground movement and groundwater penetration. Therefore, it should have **tensile strength** that allows it to comfortably move with the ground without cracking while at the same time serving as an **impermeable membrane** that keeps chemically treated pool water from leaching out. Most important, it must also prevent any groundwater from finding its way into the back of the pool shell and making a home in the structural layers of resin and fiberglass.

## the superiority of Vipoxy™ vinyl ester resin



We could tell you our fiberglass swimming pools are formed with Vipoxy™ Vinyl Ester Resin that is hydrolysis-resistant, osmosis-resistant and delamination-resistant, but it is just as easy to say each pool is designed to become an **impermeable membrane** with an air-tight adherence between the resin and the fiberglass materials used in the construction of the shell. Vipoxy™ is also less sensitive to ambient conditions and experiences less shrinkage during the curing process than a pool built with polyester resin. This provides a tremendous amount of **tensile strength** that allows the pool to absorb any impact from ground movement without developing signs of stress cracking.

# Lifetime Warranty

providing peace of mind

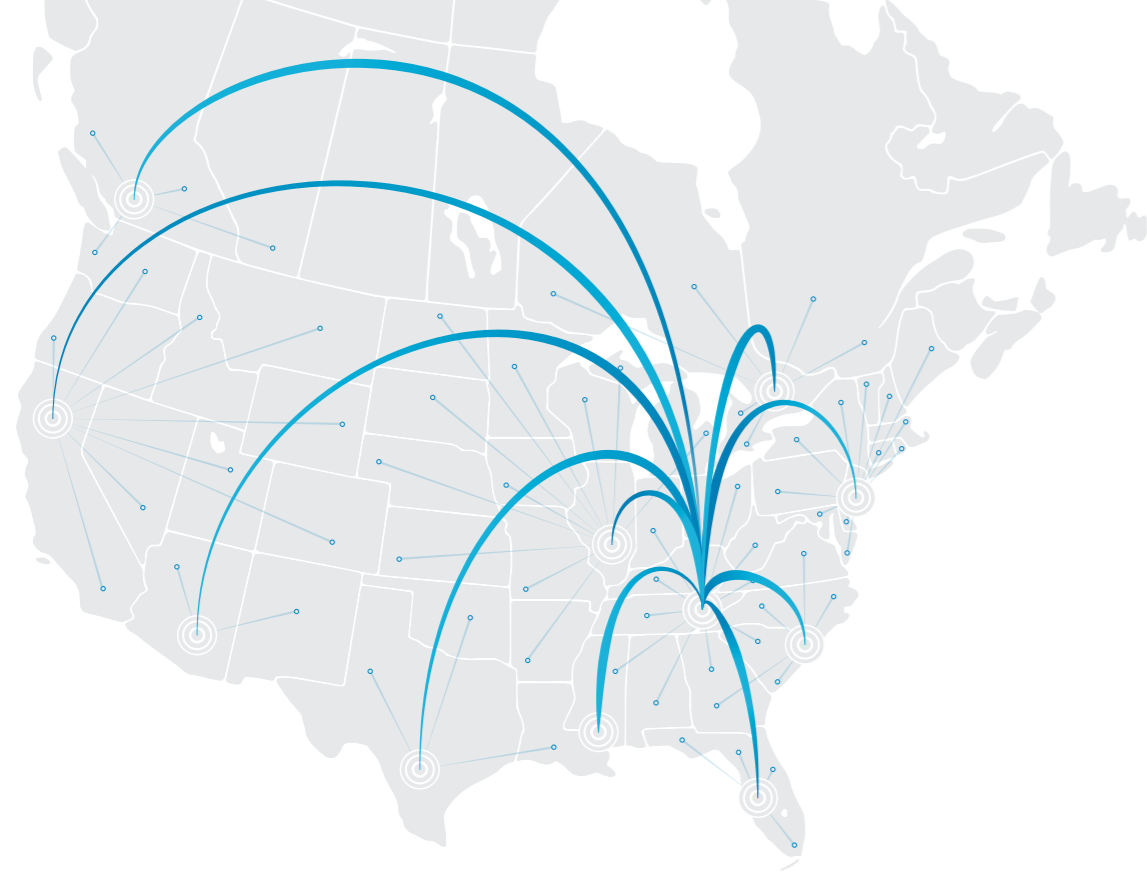
Even though it may not be as exciting as jumping into your new fiberglass swimming pool and making amazing memories with your family and friends, a pool warranty can make a cannon ball-like splash when it comes to insuring your investment. A comprehensive pool warranty may cover the costs of repairs your pool might need in the future while providing best care practices to ensure you get the most out of the lifetime of your pool.

At Imagine Pools®, we understand how important it is to you to protect your investment. It's equally important to us, too. Therefore, having not only the best warranty but the right warranty is an essential aspect of safeguarding your pool. Our warranties are comprehensive, one-time transferrable\* and an integral part of each and every one of our fiberglass pools. You benefit by protecting your pool from the unknown while also giving you the peace of mind you need.

Terms and conditions apply. See full warranty for complete details.

Note: The pool measurements referenced throughout this brochure are approximate and may vary due to enhancements in the manufacturing process made after publication. Provided measurements are generally from widest point on each side of outside edges and are provided as a guide. Please consult your Imagine Pools® dealer for more detailed and most current information. Some measurements have been rounded.





## Footprint

global support, regional distribution

Imagine Pools® is proud to create the world's best composite fiberglass swimming pools which are distributed by more than 600 talented, independently owned and operated dealerships throughout the United States and Canada. We invite you to learn more about our products by talking to one of our authorized independent dealers and asking for a free estimate so that you can truly enjoy Life at its Best™.





imaginepools®

🌐 [www.imaginepools.com](http://www.imaginepools.com)  
☎ (800) 997-7665

©2023 Imagine Pools. All rights reserved. Imagine Pools® products are supplied primarily through a network of independently owned and operated dealers authorized to sell and install various products under a license from Imagine Pools®. These dealers are not owners, employees or agents of Imagine Pools® and Imagine Pools® is not responsible for the actions of these dealers or liable for any related damage to persons, property or Imagine Pools® products. For further information regarding the relationship between Imagine Pools® and its dealers and for related advice to purchasers, please refer to the Terms and Conditions portion of the Imagine Pools® website at [www.imaginepools.com](http://www.imaginepools.com).

 **Explore**  
INDUSTRIES  
An Explore Industries Company